

TechnoFiber™CC

Chopped Carbon Fiber

PRODUCT DESCRIPTION

TechnoFiber™CC is used in compression and injection molding compounds to produce machine parts, gears and chemical valves. The finished products have excellent corrosion, creep and fatigue resistance, plus high strength and stiffness characteristics.



Buildings
Structures



Transportation
Infrastructure



Water &
Wastewater



Oil, Gas &
Industrial



Waterfront
Structures



Industrial
Facilities

TECHNICAL DATA

	Unit	TechnoFiber™CC
Chemical base		Carbon
		6
Chop length	mm	12
		Customized length
Packaging	kg	10

ADVANTAGES

- Highest quality PAN-based raw materials
- Variety of sizing agents, customized for each base polymer
- Flexibility of sizing content, from 1.5% to 5.0%
- Standard length of 6mm, can be customized
- Corrosion resistant
- Low thermal conductivity

TYPICAL USES

TechnoFiber™CC is used in the process of compression and injection molding compounds which is required for producing motor parts, machine parts and chemical valves. Based on these advantages one can understand that the chopped carbon fiber has many applications in various industries. They are used as conductive plastics in manufacturing of electronic products such as mobile phones, laptops, medical devices, anti-stat floor coatings and fuel cells. They are also used in products for increasing friction and are used in brake pads and plastic bearings.

These chopped carbon fiber applications are also used for increasing mechanical productivity due to the property of strength and thermal conductivity.

They are used as plastic reinforcement materials, resin reinforcement and concrete reinforcement.

PACKAGING

10 kg in polyethylene packaging's.

FAIRST AID

Skin

Wash fibers off skin with water and soap. If fibers are embedded in the skin, remove with tweezers. Discard clothing that may contain embedded fibers. Seek medical advice if exposure results in adverse effects.

Eyes

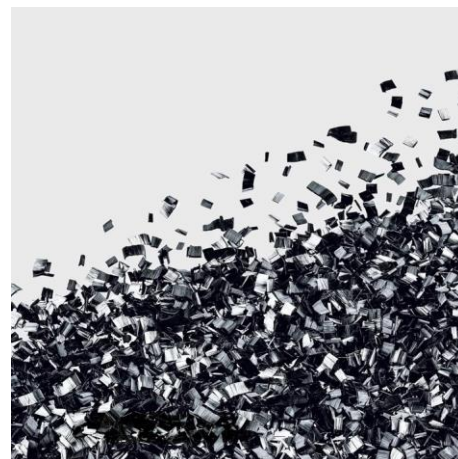
Immediately flush with a continuous water stream for at least 20 minutes. Washing immediately after exposure is expected to be effective in preventing damage to the eyes. Seek medical advice.

Inhalation

If there is inhalation exposure to the fibers of this product, remove source of exposure and move victim to fresh air. If victim is not breathing, give artificial respiration. If there is breathing difficulty, give oxygen. Seek medical advice for any respiratory problems.

Ingestion

Ingestion is not a likely means of exposure for this product. If ingestion does occur, do not induce vomiting. Give nothing by mouth if victim is unconscious. Seek medical advice.



DISCLAIMER: All guidelines, recommendations, statements, and technical data contained herein are based on information and tests we believe to be reliable and correct, but accuracy and completeness of said tests are not guaranteed and are not to be construed as a warranty, either expressed or implied. It is the user's responsibility to satisfy himself, by his own information and test, to determine suitability of the product for his own intended use, application and job situation and user assumes all risk and liability resulting from his use of the product. We do not suggest or guarantee that any hazard listed herein are the only ones which may exist. Neither seller nor manufacturer shall be liable to the buyer or any third person for any injury, loss or damage directly or indirectly resulting from use of, or inability to use, the product. Recommendations or statements, whether in writing or oral, other than those contained herein shall not be binding upon the manufacturer, unless in writing and signed by a corporate officer of the manufacturer. Technical and application information is provided for the purpose of establishing a general profile of the material and proper application procedures. Test performance results were obtained in a controlled environment and Technopol products makes no claim that these tests or any other tests, accurately represent all environments.
